

WDM-EX-THV39



Application Environments

Applicable for the factories having the explosive mixtures formed from class IIA,IIB and IIC T1-T6 group flammable gas, steam with air in area No.1 , No.2, and appearing the explosive hazardous area due to the mixture of flammable dust and air in area No.20, No.21 and No.22, such as oil field, chemical plant, port, oil storage, steamship, oil drilling platform, gas stations, coal mine, aviation, military, medicine, steel, firecrackers production, machinery, food processing and storage and so on.

Features

- 304 or 316L stainless steel, explosion-proof, dust-proof, water-proof, rust-proof.
- Germanium glass with good transmittance has stable chemical properties and is not easy to react with metal oxides, acidic substances such as air and water.
- Uncooled Vox Micro Bolometer with 640*512 resolution
- NETD is less than 40mK
- Support 3 temperature measurement rule types (spot, line, area)
- Intelligent analysis: intrusion, single line crossing, double line crossing, object left, object removed
- Support temperature monitoring and exception alarm

Technical Parameter

Model	WDM-EX-THV39
Mechanical Features	
Material	304 or 316L Stainless Steel
Surface Treatment	Original Stainless Steel Color, Electropolishing Optional
Ingress Protection	IP68
Interface Spec	M25
Weight	≤8kg
Method of Installation	Wall Mounting
Environmental	
Rated Temperature	(-30°C, +70°C)
Atmospheric Pressure	80-106KPa
Relative Humidity	≤95%RH(+25°C)

The leading brand of China explosion-proof monitoring

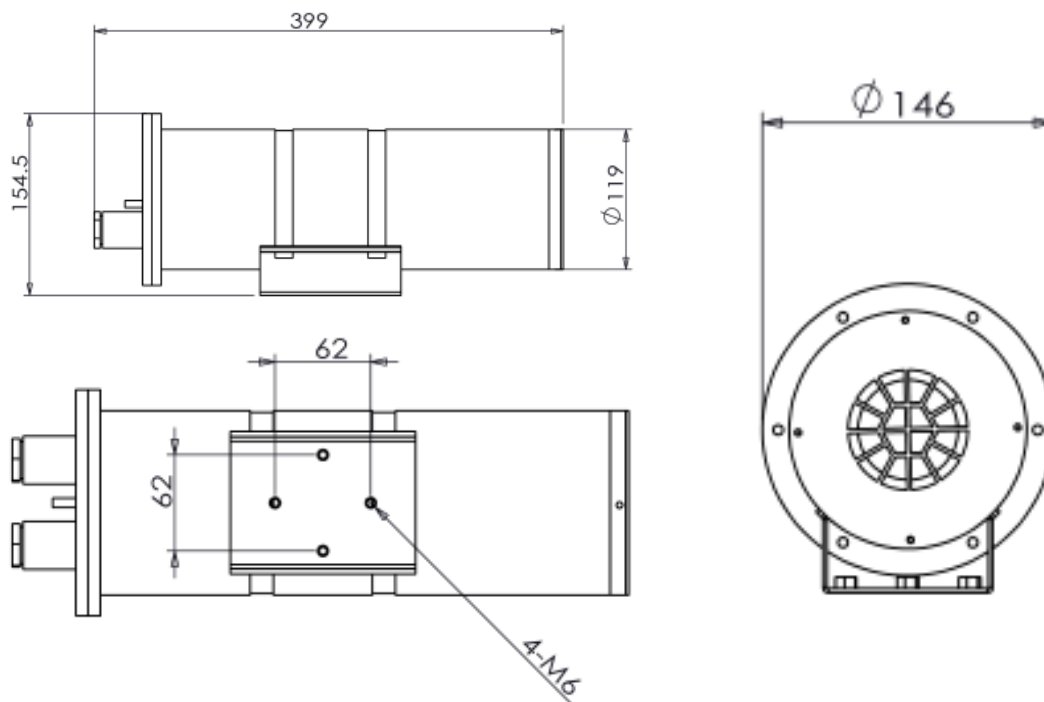
Thermal Camera				
Detector Type	VOx Uncooled Focal Plane Arrays			
Effective Pixels	Sensor is 640×512. Image can be scaled up to 704×576			
Pixel Size	17um			
Spectral Range	8~14um			
Thermal Sensitivity (NETD)	≤ 40 mK			
Lens				
Lens Type	Fixed			
Focus Control	Motorized Focus			
Fixed	8/15/25/35/50mm			
Focal Length	15mm	25mm	35mm	50mm
F No.	F1.0	F1.0	F1.0	F1.0
Angle of View	H: 39.8° V: 32.3°	H: 24.5° V: 19.7°	H: 17.6° V: 14.1°	H: 12.4° V: 9.9°
Detection Distance (Fire: 1m×1m)	441 m	735 m	1029 m	1471 m
Detection Distance (Humans: 1.8×0.5m)	441 m	735 m	1029m	1471 m
Detection Distance (Vehicles: 4×1.5m)	1353 m	2255 m	3137m	4510 m
Recognition Distance (Humans: 1.8×0.5m)	110 m	184 m	257m	368 m
Recognition Distance (Vehicles 4×1.5m)	338 m	564 m	789m	1127 m
Video and Audio				
Main Stream	704×576 @ 25/30fps			
Sub Stream	CIF @ 25/30fps			

The leading brand of China explosion-proof monitoring

Bit Rate Control	CBR/VBR
Bit Rate	Main stream: 100Kbps ~ 6Mbps Sub stream: 10Kbps ~ 1.5Mbps
Region of Interest	Off / On (8 Zone, Rectangle)
Smart Encode	Support
Audio Compression	G.711: 8kbps, RAW_PCM: 16kbps
Image	
Image Setting	Brightness, Sharpness, Contrast
Mirror	Support
Pseudo-color Setting	White-hot/Black-hot/Rainbow/Ironbow etc. up to 17 modes
DVE Image Enhance	Support
Noise Reduction	2D/3D DNR
Privacy Masking	Support
Temperature Detection	
Temperature Detection	3 temperature measurement rule types, 20 rules in total, 1 full screen, 19 others (spot, areas, line).
Temperature Alarm	Over temperature alarm, Temperature difference alarm
Accuracy	$\pm 2^{\circ}\text{C}$ / $\pm 2\%$
Response Time	$\leq 30\text{ms}$
Temperature Range	$-20^{\circ}\text{C} \sim 150^{\circ}\text{C}$ ($-4^{\circ}\text{F} \sim 302^{\circ}\text{F}$)
Temperature display mode	Temperature target $>5^{\circ}\text{C}$, Display absolute temperature value, Temperature target $\leq 5^{\circ}\text{C}$, Display relative temperature value (temperature difference DEV = highest value - average)
Network	
Protocols	IPv4/IPv6, HTTP, RTSP/RTP/RTCP, TCP/UDP, DHCP, DNS, PPPOE, SMTP, 802.1x
Interoperability	ONVIF, CGI, SDK
Max. User Access	10 Users
Web Viewer	<IE11, Chrome, Firefox, Microsoft Edge
Interface	
Network Interface	1 Ethernet (10/100 Base-T) RJ-45 Connector
Audio Interface	1ch input, 1ch output

Alarm Interface	2ch input, 2ch output
RS485	Support
CVBS Interface	BNC, 75 ohm
Reset Button	Support
SD Card Slot	Support, up to 128GB
Smart Function	
Smart Functions	Motion detection, Disk alarm, I/O alarm, Temperature detection & alarm
Intelligent Analysis	Intrusion, Single line crossing, Double line crossing, Object left, Object removed
General	
Power Supply	DC12V±10%
Power Consumption	5W
Storage Conditions	RH90%

Dimension



The leading brand of China explosion-proof monitoring